



Make your thoughts a reality just one stop.
Don't you want to try to make a new manufacturing at historical and traditional town, Kyoto.

shisaku
KYOTO SHISAKU NET





KYOTO PROTOTYPE

What is “Kyoto Shisaku Net” ?

Kyoto Shisaku Net is a "place" that connects customers who want to constantly create new value and their ideas and the companies that support them through "Shisaku" process. We want to explore the possibilities and create customer's thoughts. And we will create a new future by collaborating in this "explore" and "creating".

Why “Monodukuri” in Kyoto?

Kyoto has a history of valuing "longevity" and preserving what it inherits and passes on to the next generation. In order to continue "longevity," Kyoto has cultivated a spirit of challenge to change with the times, not just to protect it. That is why Kyoto is such a place that we can realize manufacturing that creates new value.



Those who think



I just have an idea that I want to make something like this, but I don't know who to ask.



Don't worry! We will help you from idea to materialization (without a drawing).



If possible, we want to make prototypes and products without expensive molds.



Don't worry! We have technologies for prototyping and commercializing products using simplified molds or without molds.



I'm worried about whether it can be done. I want to work with a company with a proven record.



Don't worry! We have more than 10,000 success stories. We will match you with the most suitable company.



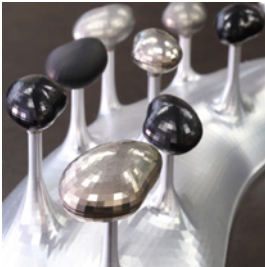
What's manufacturing of Kyoto Shisaku Net?



Cutting



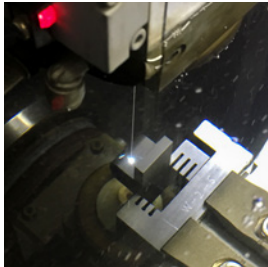
molding



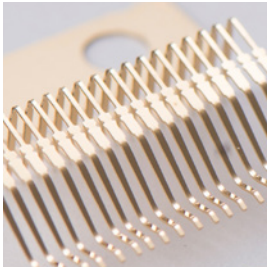
Surface treatment



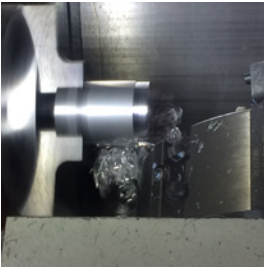
Laser Machining



Wire · Discharge



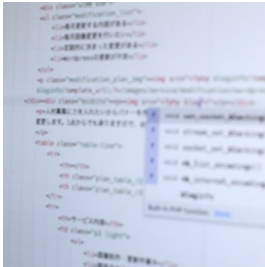
Press working



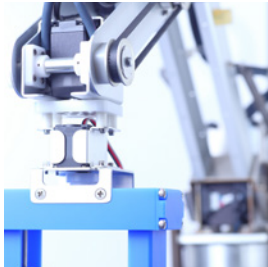
Turning process



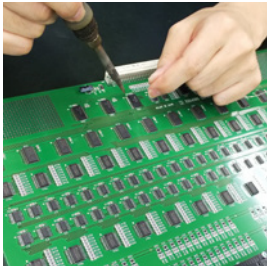
Grinding



Software development



Appliance



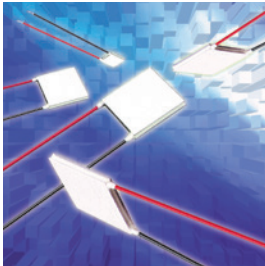
Board design



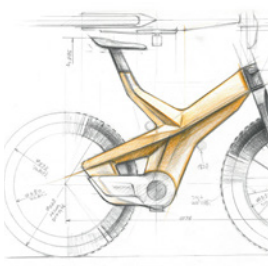
Assembly · wiring



Welding



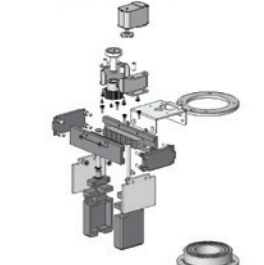
Thermal countermeasure



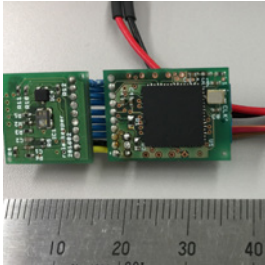
Design



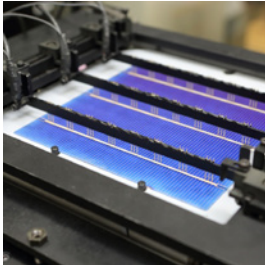
Sheet metal working



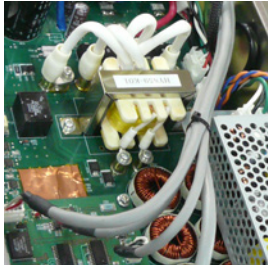
Electric equipment design



Internet of things



measurement



Power supply

We have a system that can solve your problems.

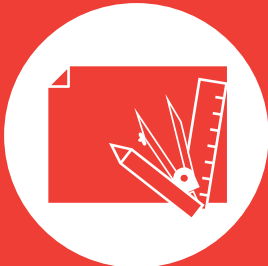
We don't form from plan only, we support our customers from beginning as needed.
We will fulfill your thought with technologies, companies, and systems that match what you are struggling and what you want to do.

Support from prototyping to mass production



Machining and assembly

Accurate design of requests and issues



Plan



Design Functionality based design



Conception Embodying ideas

How does the transaction process work?

1 Contact us on the web

You can check more about the member companies of Kyoto Shisaku Net and their top technologies on our website.



2 Select the most suitable company for your project

Choose the most suitable company from the members.



Who is best suited for this project?



We can do it! We've handled similar cases before!



We can help you with this part!

3 Meetings with the company in charge of the project to develop a more concrete plan

Deal directly with the companies at this process. Also, you can interact with some companies according to customer demand.



What is easy way for anyone can contact us?



1 Accessing from URL

<https://www.kyoto-shisaku.com/>



2 Choosing on Inquiry Form

Various consultation forms are available



3 Fill in your information

Confirm and submit your form

In this case

- I Don't want to add to bank account...
- It's complicated to sign a lot of nondisclosure agreements.

Please use Kyoto Shisaku Net

Instead of contracting with each partner company individually, you can centralize your order and account. Nondisclosure agreements can also be centralized.

Name : Kyoto Shisaku Net
Establish : June 17th 2001
Address : 〒600-8813
2F No.2 Kyoto research park,
134 Chudoji Minamimachi, Shimogyo, Kyoto

